

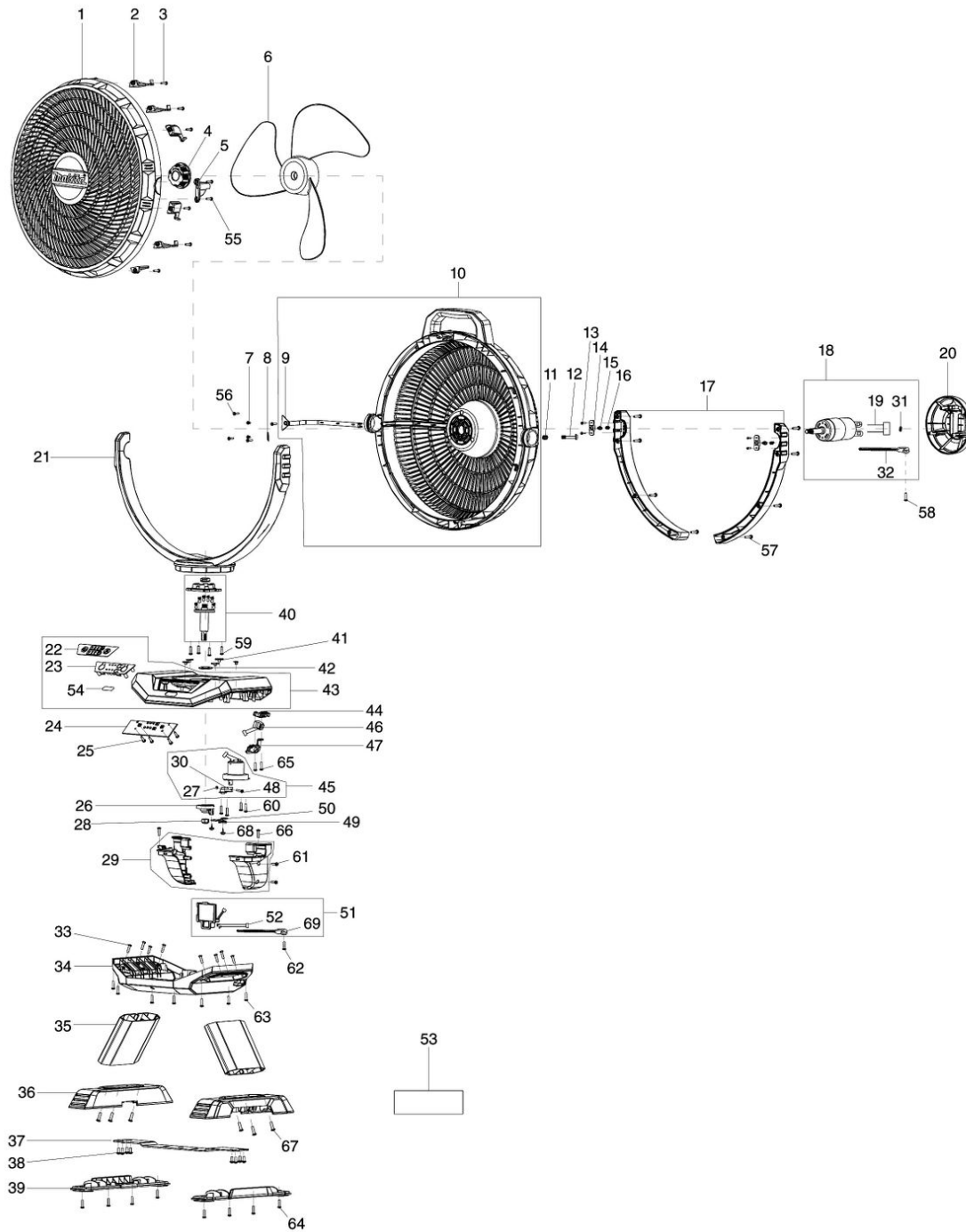
Partdrawing for CF002GZ - Ventilator



6/7/2021

MAKITA SERVICE INFORMATION

Model No.CF002G CORDLESS FAN



| Nr. | Part nr. | Name |
|-----|------------|--------------------------------|
| 001 | TE00000573 | Afdekkap CF002G |
| 002 | TE00000376 | Klemplaat DCF203D |
| 003 | TE00000028 | Tapschroef 3X14Mm Bcl201 |
| 004 | TE00000523 | Asblokkeering DCF301/CF002G |
| 005 | TE00000362 | Ontgrendelknop DCF203 |
| 006 | TE00000524 | Waaierblad DCF301/CF002G P |
| 007 | TE00000525 | Met.schr. M3x4mm DCF301/CF002G |
| 008 | TE00000558 | Borgring DCF301/CF002G |
| 009 | TE00000530 | Draadbescherming DCF301/CF002G |
| 010 | TE00000559 | Deksel DCF301/CF002G |
| 011 | TE00000378 | Drukveer DCF203 |
| 012 | TE00000364 | Schroef DCF203 |
| 013 | TE00000203 | Schroef 2,5X8 Cf100D* |
| 014 | TE00000189 | Drukplaatje Cf100D* |
| 015 | TE00000190 | Ring Cf100D* |
| 016 | TE00000197 | Veer Cf100D* |
| 017 | TE00000527 | Achtersteun DCF301/CF002G |
| 018 | TE00000528 | Motor assy DCF301/CF002G |
| 019 | TE00000529 | Motorkabel DCF301/CF002G |
| 020 | TE00000531 | Motorafdekkap DCF301/CF002G |
| 021 | TE00000532 | Statief DCF301/CF002G |
| 022 | TE00000560 | Label A/U CF002G |
| 023 | TE00000534 | Schakelpaneel DCF301/CF002G |
| 024 | TE00000574 | Circuit CF002G |
| 025 | TE00000388 | Schroef M3x10mm |
| 026 | TE00000274 | Buffer 1 DCF102 |
| 027 | TE00000281 | Moer M3 DCF102 |
| 028 | TE00000450 | Moer M8 plat CF001G |
| 029 | TE00000575 | Batterijhuis CF002G |
| 030 | TE00000282 | Buffer 2 DCF102 |
| 031 | TE00000537 | Draadgeleider DCF301/CF002G |
| 032 | TE00000407 | Kabelband DCF203 |
| 033 | TE00000538 | Met.schr. M4x8mm DCF301/CF002G |
| 034 | TE00000539 | Afdekkap DCF301/CF002G |
| 035 | TE00000576 | Voethouder CF002G |
| 036 | TE00000541 | Voetbasis DCF301/CF002G |
| 037 | TE00000542 | Montageplaat DCF301/CF002G |
| 038 | TE00000543 | Met.schr. M3x10mm DCF301 |
| 039 | TE00000544 | Voetrubber DCF301/CF002G |
| 040 | TE00000545 | As DCF301/CF002G |
| 041 | TE00000474 | Aanslagplaat CF001G |
| 042 | TE00000546 | Sluitring DCF301/CF002G |
| 043 | TE00000577 | Afdekkap CF002G P |
| 044 | TE00000548 | Laadaansluiting DCF301/CF002G |
| 045 | TE00000561 | Motor DCF301/CF002G |
| 046 | TE00000549 | Laadbord DCF301/CF002G |

Partdrawing for CF002GZ - Ventilator



| Nr. | Part nr. | Name |
|------------|-----------------|--------------------------------|
| 047 | TE00000550 | Adapterplaat DCF301/CF002G |
| 048 | TE00000102 | Met.Schr. Ck M3X14Mm |
| 049 | TE00000551 | Demper DCF301/CF002G |
| 050 | TE00000552 | Sluitring DCF301/CF002G |
| 051 | TE00000553 | Aansluitunit CF002G |
| 052 | TE00000555 | Batterijkabel DCF301/CF002G |
| 053 | TE00000586 | Label rate CF002G |
| 054 | TE00000580 | Label XGT CF002G |
| 055 | TE00000028 | Tapschroef 3X14Mm Bcl201 |
| 056 | TE00000028 | Tapschroef 3X14Mm Bcl201 |
| 057 | TE00000028 | Tapschroef 3X14Mm Bcl201 |
| 058 | TE00000028 | Tapschroef 3X14Mm Bcl201 |
| 059 | TE00000028 | Tapschroef 3X14Mm Bcl201 |
| 060 | TE00000028 | Tapschroef 3X14Mm Bcl201 |
| 061 | TE00000028 | Tapschroef 3X14Mm Bcl201 |
| 062 | TE00000028 | Tapschroef 3X14Mm Bcl201 |
| 063 | TE00000028 | Tapschroef 3X14Mm Bcl201 |
| 064 | TE00000028 | Tapschroef 3X14Mm Bcl201 |
| 065 | TE00000388 | Schroef M3x10mm |
| 066 | TE00000388 | Schroef M3x10mm |
| 067 | TE00000538 | Met.schr. M4x8mm DCF301/CF002G |
| 068 | TE00000543 | Met.schr. M3x10mm DCF301 |
| 069 | TE00000407 | Kabelband DCF203 |